

# Abiquo Enterprise Edition v2.0

Abiquo's Enterprise Cloud software solution is changing the expectations of what cloud computing should deliver. Abiquo's approach to private and hybrid clouds addresses the needs of the three core stakeholders and enables IT to deliver a comprehensive cloud solution with full control and governance, while empowering users with just-in-time access to the infrastructure they need.

Abiquo was designed and built specifically to meet the needs of today's enterprises. User groups must have the ability to self-provision resources without IT assistance, IT operations must have total control of the resources, and the CFO needs to ensure the security and compliance of the enterprise cloud. The latest release of the Abiquo solution extends the functionalities for all three core stakeholders.

## Role-Based Empowerment

*for Application and Development Teams*

Abiquo provides cloud consumers with complete, on-demand, self-service provisioning of virtual compute, storage and networking resources. From the simplicity of a fully customizable provisioning portal to the sophistication of the vApp builder canvas in the award winning user interface, Abiquo's delivers role-based empowerment to meet the business need. Autonomous virtual enterprises provide the ability to sub-allocate resources, and to

self-manage users, roles and service catalogs as appropriate. Supporting all major hypervisors simultaneously, Abiquo allows hypervisor selection based on functionality or cost, and provides the ability to convert virtual machines to run on a different hypervisor with a single drag-and-drop operation.

## Control and Visibility

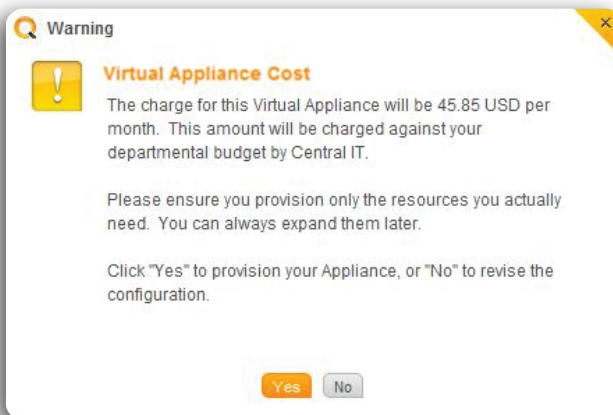
*for IT Operations*

Abiquo centralizes physical resources from any number of datacenters, providing global infrastructure management through a "single pane of glass". Flexible storage management allows aggregations from a wide variety of devices to be presented as managed tiers, each with its own performance/resilience characteristics. Automatic VLAN creation isolates tenants and sub-tenants, such that even fully empowered users do not introduce risk to others. IT Operations always retains full visibility and control through enforced resource Consumption limits, operational limits and role-based access control.

## Governance and Efficiency

*for Compliance and the CFO*

Advanced Business Policy, automatically and consistently applied, ensures security, compliance, governance and operational goals are fully met. ROI and cost savings are assured through efficient deployment of virtual resources according to utilization and load balancing policies. Unlimited, multi-currency, pricing models with the ability to individually price each resource and/or image provides complete flexibility, and supports chargeback, show-back and show-forward reporting.



Show-forward pricing and just-in-time provisioning encourage behavior change leading to substantial cost savings

## Key 2.0 Features and Benefits

### Enterprise-Class Software

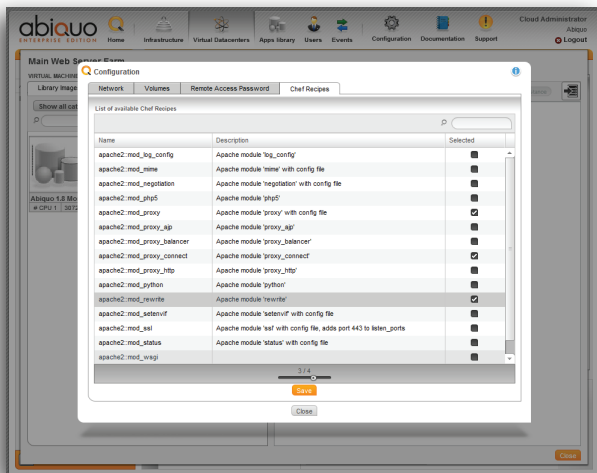
Abiquo delivers a complete solution that is simple to deploy, supports LDAP integrations and is standards based. Additionally, it enables private label branding, and now extends the clean GUI to support 8 languages.

#### ▶ Extended Localization

Abiquo's award-winning GUI has also been further localized into eight international languages "out-of-the-box," including English, French, German, Spanish, Portuguese, Dutch, Simplified Chinese and Japanese.

### Self-Service Access

Abiquo helps enterprises successfully build internal or hybrid clouds by delivering functionality designed to support the needs of each stakeholder - application and development teams, IT Operations, Compliance and the CFO. In addition to the award-winning self-service GUI and capabilities, such as virtual to virtual conversion, delegated tiers of control, a robust virtual appliance library and vApp creation capabilities using the drag and drop vApp Canvas, these new features continue to help IT deliver automated self-service.



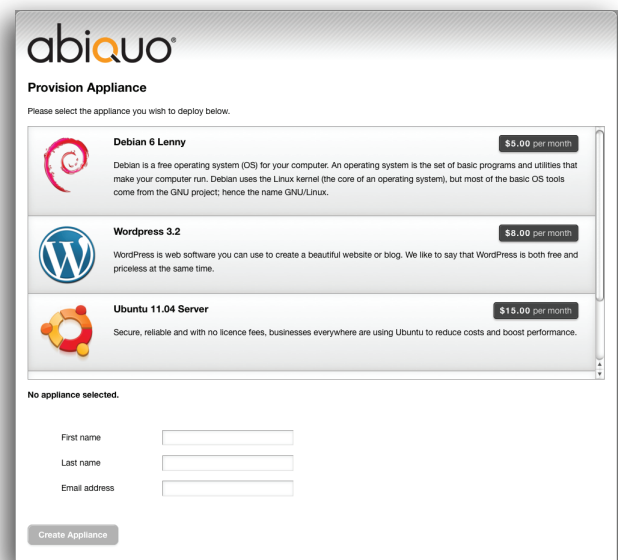
Selecting Opscode Chef recipes for post-deployment configuration and customization

#### ▶ Opscode Chef Integration

Integration with Opscode Chef allows suitably permissioned users to individually customize virtual machines at deployment time. Abiquo presents available Chef "recipe" options, and then passes the selected machine configuration to the Chef server for seamless customization to the user's exact requirements - all from within the Abiquo GUI. This offers even the most complex enterprises with greater opex savings through streamlined automation. By combining Abiquo's infrastructure automation with a "write once, deploy many" Chef recipe, users significantly cut the amount of time and effort needed to set up new environments. Additionally, the Opscode expert community can be leveraged to help build the right recipes, saving even more time.

#### ▶ Fully Customizable End User Portal

Many enterprise and MSP customers want to provide a sub-set of users with a simplified deployment portal customized exactly to their needs. Abiquo now



End-user portal makes self-service deployment swift, controlled, and the costs transparent.

provides a complete portal, which leverages the Abiquo API, for self-service creation of virtual enterprises (tenants), virtual datacenters (sub-tenants) and virtual appliances (applications), and is fully customizable for “fast-track” implementations, as well as delivery of a simple service catalog. The portal also supports an optional approvals workflow including full email integration for “one-click” management.

#### ► Infinitely Flexible Self-Service Storage Options

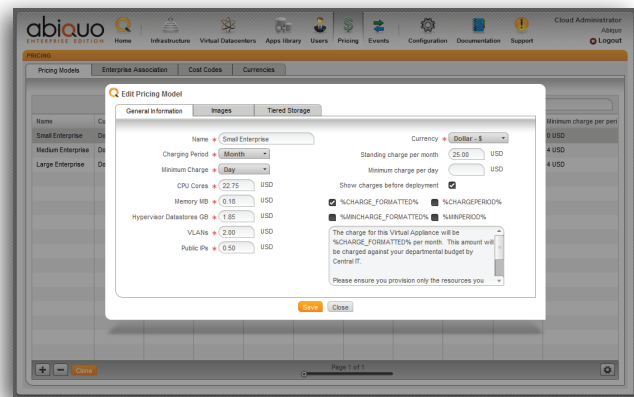
Abiquo 2.0 supports the widest range of self-service storage options. Each virtual machine image volume, and each of its attached data volumes, can be self-provisioned on storage protocol agnostic hypervisor datastores, or as persistent block level storage in a fully managed tier model, supporting a wide variety of storage devices, including NetApp Multistore enabled storage systems.

#### Services Based On Business Policies

Compliance teams and the CFO are concerned with enforcing usage rules and creating efficiencies that drive cost savings. In addition to a robust business policy engine that allows these teams to set rules around security, compliance, energy costs, utilization and more, as well as the ability to offer autonomous, multi-tenant virtual enterprises, Abiquo has extended its offering to include these new features.

#### ► Unlimited Multi-Currency Pricing Model Engine for Chargeback, Show-Back, and Show-Forward

Abiquo 2.0 supports an unlimited number of pricing models, each in any international currency and with any combination of individually defined resource, application and standing charges, which can also vary by storage tier and physical datacenter. Each tenant can be assigned to any defined pricing model for ultimate flexibility. Pricing models are used not only for chargeback and show-back, but additionally “show-forward” allowing users to be fully informed and optionally notified of the exact cost of each virtual appliance



Customization of per tenant pricing structure

before it is deployed. Coupled with Abiquo’s complete self-service model, this encourages “just-in-time provisioning,” whereby users consume only the virtual resources they actually need, dramatically increasing utilization and lowering costs.

#### ► Jaspersoft Open Source Reporting Integration

Abiquo 2.0 includes full integration with the Jaspersoft open source business intelligence platform. A range of sample reports, rebranded “skin” and Abiquo authentication plug-in are all provided in open source form, allowing customers to extend or customize reporting to meet their own requirements.

#### Optimizing Physical and Virtual Infrastructure

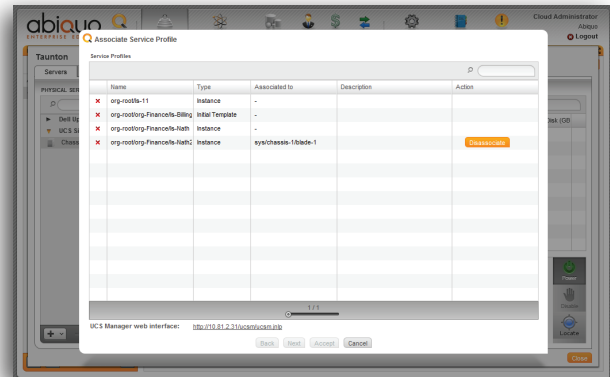
IT Operations teams know they need to be responsive to the business, but they must also have control and visibility to the environments they serve. Abiquo’s scalable management and automation capabilities allow IT teams to centrally manage distributed compute, storage and networking on existing infrastructure, run and enable high availability across multiple hypervisors concurrently, and support role based access controls. Additionally, version 2.0 deepens support for complex enterprise infrastructure, by adding these enhancements.

▶ Extended Self-Service Networking Capabilities

In addition to automatic provisioning of isolated private networks and self-service provisioning of both additional private networks and public IP addresses, Abiquo 2.0 supports multiple pre-defined external networks, allowing IP address pools to be shared among multiple virtual datacenters in an enterprise. Any private or external network can be used as the default for each virtual datacenter, providing automatic address assignment.

▶ Extended Hypervisor, NetApp and Cisco UCS Support

Building on the industry's broadest hypervisor support, Abiquo 2.0 extends support for the newest editions emerging including VMware vSphere 5 and Citrix XenServer 6. Additionally, Abiquo continues to enhance its enterprise support for Cisco UCS. In version 2.0, support is extended to include assignment of Service Profile templates to each blade in a UCS chassis, as well as power and location ID functions.



Cisco UCS Service Profile Selection

## About Abiquo

Abiquo delivers the industry's most advanced Enterprise Cloud software solution, allowing customers to rapidly build and manage a fully automated and governed, self-service, multi-stack, multi-hypervisor, private, public or hybrid cloud from globally deployed resources.

Uniquely designed to address the needs of all major stakeholders, Abiquo's award-winning solution completely informs and empowers application and development teams and provides unprecedented levels of visibility and control for IT Operations, while mitigating data security risks, ensuring corporate governance, and facilitating ground breaking levels of datacenter efficiency and cost reduction.

**HEADQUARTERS**  
 203 Redwood Shores Parkway, #280  
 Redwood City, CA 94065  
 United States  
 T: +1 650 264 5900  
[www.abiquo.com](http://www.abiquo.com)

**abiquo**<sup>®</sup>  
 ENTERPRISE CLOUD